

CORRECTION

Open Access



Correction: Tailoring dissemination strategies to increase evidence-informed policymaking for opioid use disorder treatment: study protocol

Erika L. Crable^{1,2,3*} , Colleen M. Grogan⁴, Jonathan Purtle^{5,6}, Scott C. Roesch^{2,7} and Gregory A. Aarons^{1,2,3}

Correction: Implement Sci Commun 4, 16 (2023)
<https://doi.org/10.1186/s43058-023-00396-5>

Following publication of the original article [1], the authors identified an error in Fig. 1. The correct figure is given below.

Published online: 17 March 2023

The original article can be found online at <https://doi.org/10.1186/s43058-023-00396-5>.

*Correspondence:

Erika L. Crable
ecrabl@health.ucsd.edu

¹ Department of Psychiatry, University of California, San Diego, La Jolla, CA, USA

² Child and Adolescent Services Research Center, San Diego, CA, USA

³ University of California, San Diego Altman Clinical and Translational Research Institute Dissemination and Implementation Science Center, La Jolla, CA, USA

⁴ Crown Family School of Social Work, Policy, and Practice, The University of Chicago, Chicago, IL, USA

⁵ Department of Public Health Policy and Management, New York University School of Global Public Health, New York City, NY, USA

⁶ Global Center for Implementation Science, New York University School of Global Public Health, New York City, NY, USA

⁷ Department of Psychology, San Diego State University, San Diego, CA, USA

Reference

1. Crable EL, Grogan CM, Purtle J, et al. Tailoring dissemination strategies to increase evidence-informed policymaking for opioid use disorder treatment: study protocol. *Implement Sci Commun.* 2023;4:16. <https://doi.org/10.1186/s43058-023-00396-5>.



© The Author(s) 2023. **Open Access** This article is licensed under a Creative Commons Attribution 4.0 International License, which permits use, sharing, adaptation, distribution and reproduction in any medium or format, as long as you give appropriate credit to the original author(s) and the source, provide a link to the Creative Commons licence, and indicate if changes were made. The images or other third party material in this article are included in the article's Creative Commons licence, unless indicated otherwise in a credit line to the material. If material is not included in the article's Creative Commons licence and your intended use is not permitted by statutory regulation or exceeds the permitted use, you will need to obtain permission directly from the copyright holder. To view a copy of this licence, visit <http://creativecommons.org/licenses/by/4.0/>. The Creative Commons Public Domain Dedication waiver (<http://creativecommons.org/publicdomain/zero/1.0/>) applies to the data made available in this article, unless otherwise stated in a credit line to the data.

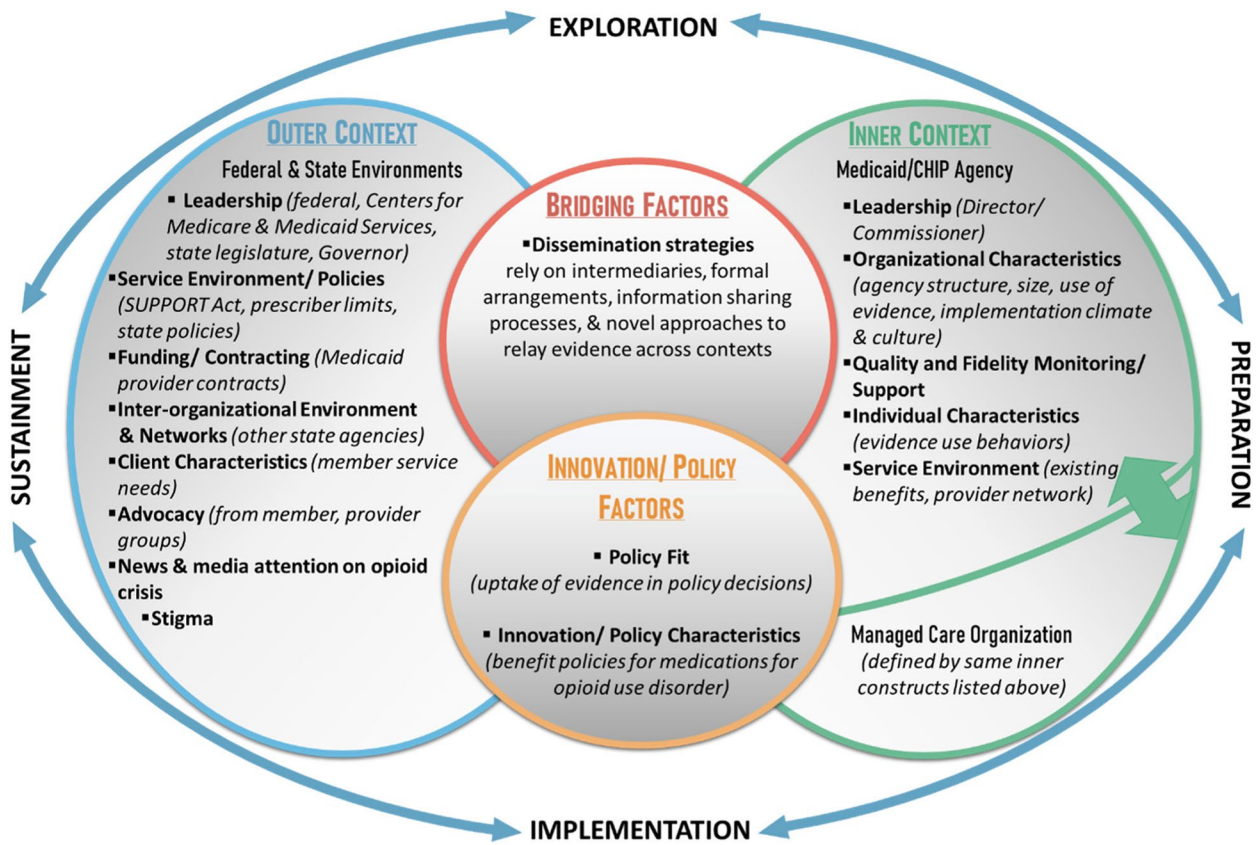


Fig. 1 Adapted Exploration, Preparation, Implementation, Sustainment framework for investigating influences on policymaking processes